

## SERBATOI NUDI - NAKED TANKS



### DATI GENERALI - GENERAL DATA

Capacità: 5-1000 Lt.

Pressione: 11-15 bar

Test: 87/404CE

Materiale: acciaio al carbonio

Finitura: grezzo - verniciato RAL 5015 - zincato

Capacity: 5-1000 Lt.

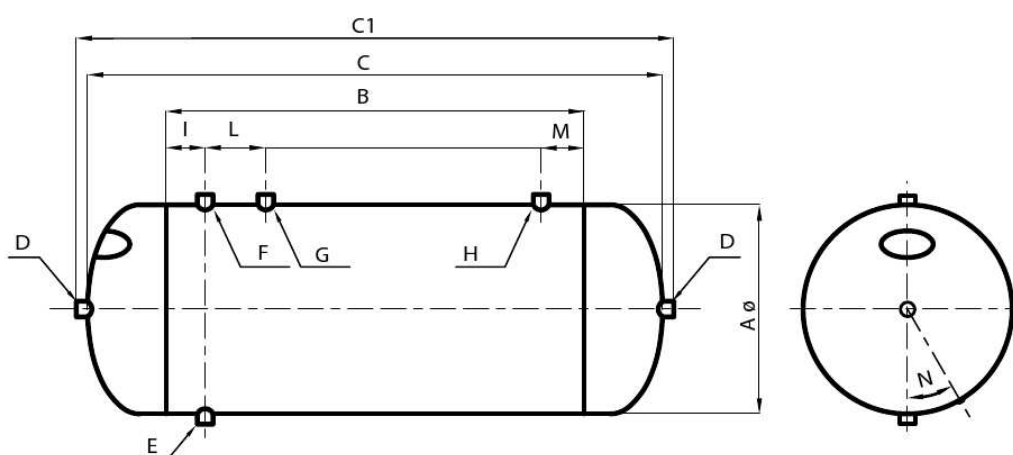
Pressure: 11-15 bar

Testing: 87/404CE

Material: carbon steel

Finishing: unpainted - painted RAL 5015 - galvanized

### DISEGNO TECNICO TECHNICAL DRAWING



## SERBATOI NUDI - NAKED TANKS

litri*	press bar	A mm	B mm	C mm	C1 mm	D	E	F	G	H	I mm	L mm	M mm	N
5Δ	-	140	240	302	-	-	3/8"	-	-	-	40	-	-	30°
10	11-15	170	400	514	546	1/2"	3/8"	-	-	3/8"	100	-	50	36°
15	11-15	210	450	578	610	1/2"	3/8"	-	-	3/8"	120	-	50	26°
25L	11-15	210	570	698	730	1/2"	3/8"	3/8"	1/2"	-	40	60	-	26°
25c	11-15	240	420	546	578	1/2"	3/8"	-	-	3/8"	100	-	50	36°
50	11-15	280	685	863	895	1/2"	3/8"	3/8"	3/4"	-	60	100	-	46°
50c	11-15	300	590	774	806	1/2"	3/8"	3/8"	-	-	50	-	-	34°
90	11-15	350	800	1016	1048	1/2"	3/8"	3/8"	3/4"	1/2"	60	100	60	37°
90c	11-15	370	700	914	946	1/2"	3/8"	3/8"	3/4"	1/2"	50	100	50	36°
100	11-15	350	875	1091	1123	1/2"	3/8"	3/8"	3/4"	1/2"	60	100	60	37°
100c	11-15	370	800	1014	1046	1/2"	3/8"	3/8"	3/4"	1/2"	50	100	50	36°
150	11-15	400	1000	1224	1256	1/2"	3/8"	3/8"	3/4"	1/2"	60	155	60	34°
200	11-15	440	1100	1354	1386	1/2"	3/8"	3/8"	3/4"	1/2"	60	155	60	31°
270	11-15	490	1150	1456	1488	1/2"	3/8"	3/8"	1"	1/2"	60	155	60	32°
300	10-15	490	1300	1606	1638	1/2"	3/8"	3/8"	1"	1/2"	60	155	60	32°
500	11-15	600	1500	1856	1898	1"	3/8"	3/8"	1"	1/2"	60	155	60	40°
1000Δ	-	800	1650	2143	2199	1" 1/4	1/2"	-	-	-	75	-	-	34°

\*: capacità - capacity

Δ: senza certificazione - without certification