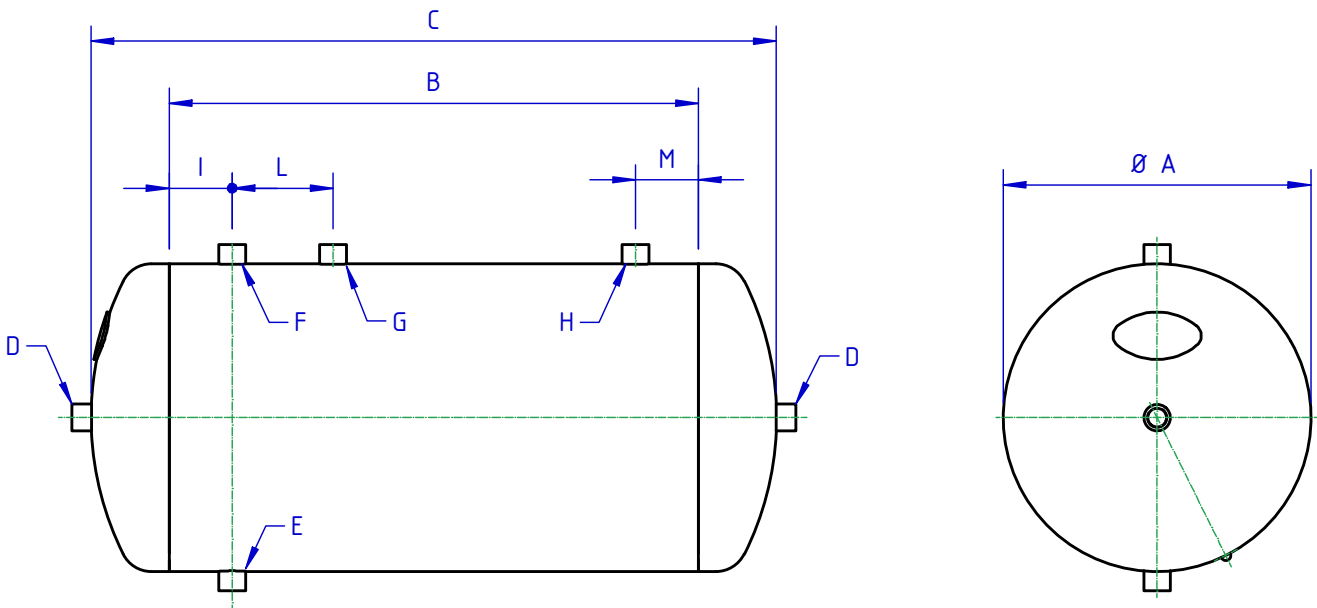


This drawing is propriety of SEA S.p.A..Hand over or reproduction, partial as well, is forbidden at any level. Each abuse will be legally prosecuted.

0	Emissione	16/02/2019	F.C.
REV	DESCRIZIONE	DATA	AUTORE



Liters	Bar	A mm	B mm	C mm	D inch	E inch	F inch	G inch	H inch	I mm	L mm	M mm	Kg
5	8-10	140	240	308	1/2"	3/8"	--	--	--	40	--	--	4
10	11-15	170	400	512	1/2"	3/8"	--	--	3/8"	100	--	50	6-7
15	11-15	210	450	574	1/2"	3/8"	--	--	3/8"	120	--	50	9-11
25L	11-15	210	570	694	1/2"	3/8"	3/8"	1/2"	--	40	60	--	10-14
25c	11-15	240	420	544	1/2"-1"	3/8"	--	--	3/8"	100	--	50	9-13
50	11-15	280	685	863	1/2"	3/8"	3/8"	3/4"	--	60	100	--	18-22
50c	11-15	300	590	774	1/2"	3/8"	--	--	--	50	--	--	17-21
90	11-15	350	800	1010	1/2"	3/8"	3/8"	3/4"	1/2"	60	100	60	25-45
90c	11-15	370	700	910	1/2"	3/8"	3/8"	3/4"	1/2"	50	100	50	23-43
100	11-15	350	875	1085	1/2"-2"	3/8"	3/8"	3/4"	1/2"	60	100	60	27-47
100c	11-15	370	800	1010	1/2"	3/8"	3/8"	3/4"	1/2"	50	100	50	26-46
150	11-15	400	1000	1224	1/2"-2"	3/8"	3/8"	3/4"	1/2"	60	155	60	41-51
200	11-15	440	1100	1350	1/2"-2"	3/8"	3/8"	3/4"	1/2"	60	155	60	50-60
270	11-15	490	1150	1456	1/2"-2"	3/8"	3/8"	1"	1/2"	60	155	60	60-70
300	10-15	490	1300	1606	1/2"	3/8"	3/8"	1"	1/2"	60	155	60	65-75
500	11-15	600	1500	1856	1"-2"	3/8"	3/8"	1"	1/2"	60	155	60	119-150
1000*	11,5	800	1650	2143	1"1/4	1/2"	--	--	--	75	--	--	190



DIRETTIVA-Certification:  
**SPVD 2014/29/EU**  
 \* PED 2014/68/EU

TEMPERATURA D'ESERCIZIO-Working temperature:  
 -10°C +120°C

TRATTAMENTO-Treatment:  
 VERNICIATO/Painted-ZINCATO/Galvanized

DESCRIZIONE-Description:  
**SERBATOI NUDI**  
*Bare Tanks*

DISEGNO-Drawing:

**0117**